

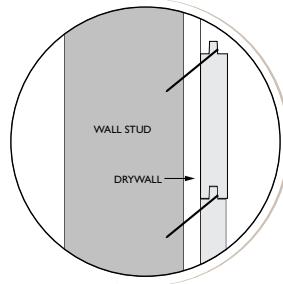


E-PECK[®]

INSTALLATION GUIDE

1. Important: During the normal course of installation, you might find some undesirable areas of a board that you may not want in your ceiling (i.e., a knot that might have fallen out, splits, side bent boards, etc.). **DO NOT SET THESE BOARDS ASIDE!** Simply cut out the area on the board you do not want and use the drops as starter or end pieces. The 5% waste included in your calculations takes into account these cut-outs.

2. To insure a random pattern, start by cutting a random length from a full length piece or a shorter end-matched board and attach it cut side toward the end wall. We recommend leaving a 1/4" - 3/8" gap around the perimeter to allow for any expansion of the wood. We recommend blind nailing. This is done by nailing through the tongue with a finish nail on an angle into solid lumber framing (i.e., bottom of truss, furring strips, etc) The total effective nail penetration through the wood should be at least 1-1/2" deep.



3. Next, attach full length pieces; sliding the end-matched tongues tightly into the grooves, to complete the first run. The end-matched seams do not need to line up on the truss. **USE BOARDS AS THEY COME OUT OF THE PACKS!**

4. Use the drop from the first cut to start the second run from the opposite end and complete the run with full length pieces. Save ALL cut offs that have either a male-end or a female-end; these can be used as starter pieces on each run.

5. Plan each run by estimating where you want the next end matched joint to fall.

6. Repeat and continue this process until you are finished covering your surface. Using your mallet/hammer, make sure you keep the joints tight when nailing.

7. Measure, cut and install the trim moldings** around the perimeter of the area to cover gaps at the ends or at the walls. These are the only places you will have to face nail the wood. We recommend using pin or brad nails to install trim.

8. Always measure twice, cut once!

** Trim moldings are available in various sizes; 1-1/2" Ceiling Trim, 1-3/4" Crown, 3-1/4" Crown and 5-3/8" Crown.

SUGGESTED TOOLS:

- ✓ Tape Measure
- ✓ Blue Tape for Marking / Placement
- ✓ Nail Gun
- ✓ Air Compressor (for nail gun)
- ✓ Rubber Mallet / Hammer
- ✓ Circular Saw / Hand Saw / Jig Saw
- ✓ Nail Set Tool
- ✓ 15 Gauge x 2" Galvanized Nails to Apply Directly to Truss or 2.1/2" Galvanized Nails to Apply Through Drywall into Truss

ADDITIONAL INFORMATION:

- Do not expose the product to direct sunlight, rain or moisture.
- This product is designed for interior ceilings and walls and exterior porch ceilings.
- Because wood is nature's product, when stained, variations in color and grain pattern are to be expected. This is the natural beauty of wood. Color variation and grain pattern (including heartwood) are not considered a defect. Use boards as they come out of the packs. Do not attempt to color match boards in the room.
- For further information on Synergy products, including grading and What to Expect, please go to www.SynergyWood.com.



3031 S Mellonville Ave
Sanford, FL 32773
info@synergywood.com

tf: 866.791.6714
o: 321.397.2000
f: 407.679.1108

WWW.SYNERGYWOOD.COM